

“The efficiency and simplicity of the ELV-Lite system has provided us with both a solution and an investment”

Nathan Hemmings
Project Manager - Stowe Australia



Blacktown Hospital Temp. Lighting

The Blacktown Hospital redevelopment includes a new 9 story Acute Services Building. The multi-million-dollar building will house a new emergency department, a psychiatric emergency care service, intensive care unit, New birthing wards and paediatric services with dedicated emergency department facilities, Expansion of medical imaging and non-clinical support services, New entry atrium and tunnel connections to the existing hospital buildings and link bridges to the carpark.

MyModular's newest product line, ELV-Lite was chosen by Stowe Australia to service the temporary construction lighting required for the Blacktown Hospital project.

The 'plug and play' modular cabling system, low voltage control boards and extra low voltage light fittings created greater flexibility and faster installation of temporary lighting.

MyModular ELV products are completely recyclable and Stowe have been able to use them on multiple projects.

Client

Stowe Australia

Project Scope

650 Temporary Light Fittings

Location

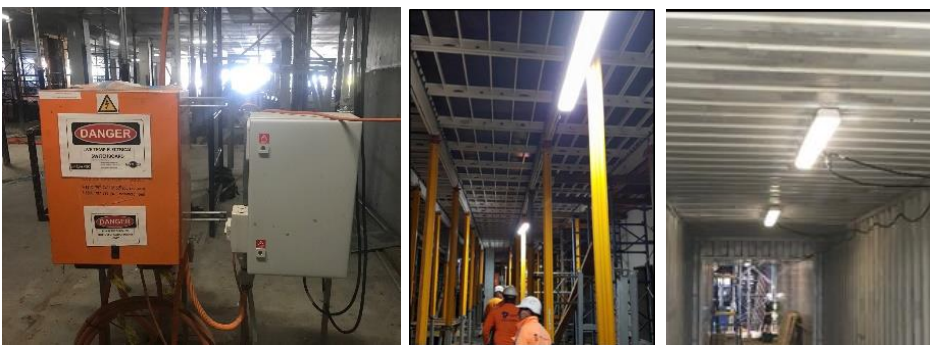
Blacktown NSW

Products Used

2,000+ ELV-Lite Products

Tags

Health, Temp Lighting, ELV



ELV | lite™