

“The Australian made product was very reliable and the fact that it was made locally meant it was just 4 weeks from order to delivery no matter what.”

Mark Osborne
Design Manager - Nilsen Australia



New Royal Adelaide Hospital

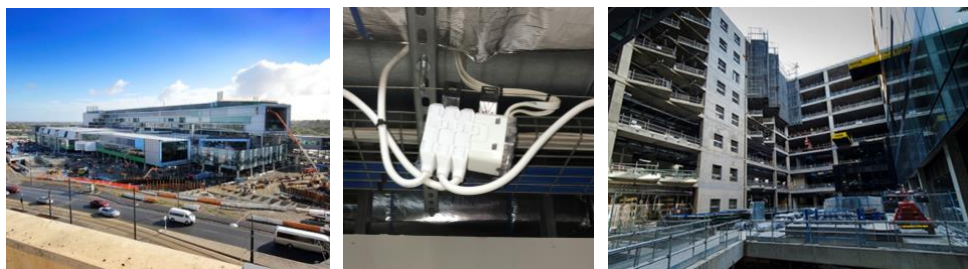
With a total construction budget of \$1.8 Billion, the New Royal Adelaide Hospital was the largest health related construction project undertaken in Australia in 2011. It is the single largest infrastructure project ever under taken in the state of South Australia.

It forms the centre piece of the newly revitalised business precinct at the west end of the city that also includes several other notable projects completed with WBC product including the SAHMRI Building, the Adelaide Convention Centre, the Adelaide Oval Sports Stadium, 108 North Terrace and the University Of SA.

The project scope included 8146 rooms which equated to more than 40,000 DALI light fittings in total. The WireByClick 5PIN modular lighting loom solution was supplied for all general lighting though out. As part of the process MyModular completed detailed marked up drawings complete with a bill of materials for each floor zone illustrating the intended installation plan making install onsite simple and efficient. Because product was made locally it reduced lead times from 12 weeks to 4 weeks for all lead orders.

“Overall, I was very impressed with the drawing, manufacturing and delivery processes that MyModular had in place. This team is very proactive”.

Mark Osborne
Design Manager - Nilsen Australia



Client

Nilsen Pty Ltd

Project Scope

8146 Rooms with over 40,000 DALI Light Fittings in total

Location

Adelaide, SA

Products Used

80,000+ WBC Products

Tags

Health, WBC, Light

WIRE BY CLICK™