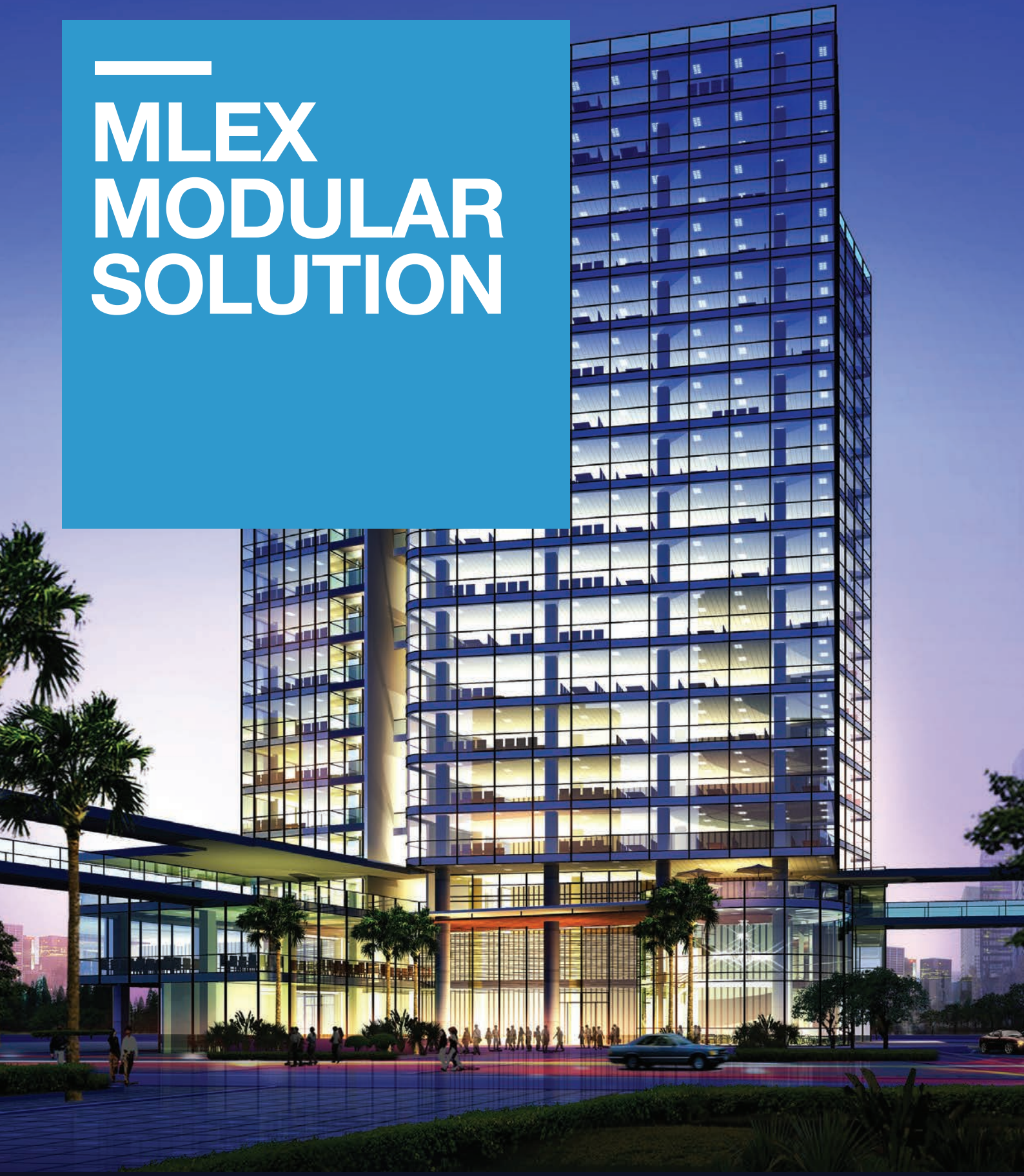


# --- MLEX MODULAR SOLUTION



---

# MLEX IS THE NEW PURPOSE BUILT MODULAR SOLUTION

## **MLEX is a purpose built modular solution for electrical installs that truly puts the power back in your hands.**

Its ability to seamlessly adapt to practically every install application across almost any construction category is truly unique and can be attributed to the two key design principles established early in its development.

---

### **“Make it comprehensive, but keep it simple”.**

As a result the MLEX product uses minimal parts to achieve maximum installations. It is compact and can go just about anywhere. It is scalable so it can be used to install a little (just light or power) or a lot (a full turnkey solution). The option to customise lead lengths allows for absolute precision and the rewirable range offers unrestricted flexibility and total control whilst installing on site.

---

### **MLEX was designed as a modular solution, not just a modular product.**

In addition to its superior technical advantages, The MLEX experience is further enriched through the well considered service model that supports it.

The whole MLEX solution is underpinned by the detailed drawing service which marks up existing PDF or DWG files. The designs are completed by our dedicated drawing team with input from the Project Manager to ensure the very best outcomes are achieved. Each individual product is displayed, colour coded and clearly marked to show the cable length.

The colours not only help to differentiate between individual products but also correspond directly with the packaging labels ensuring that when it gets to site, finding what you need and where it needs to go is very easy. Each drawing also has its very own detailed Bill Of Materials available for referencing providing unparalleled accuracy and clarity throughout the planning and quoting phase of any project.

---

### **The MLEX Marked Up Drawings then become the perfect blue print for the team to use when completing the installation.**

The advantage of the MLEX solution also extends to quality product and quick response times, which are critical factors on every construction project. MLEX leads are made locally in Australia which not only guarantees some of the highest quality production standards in the world, but importantly also guarantees the shortest possible lead times apply to all MLEX orders.

Whether you're in commercial, residential, volume housing, high density residential or modular buildings we'd love to hear from you.



---

# MLEX APPLICATIONS

---

## Residential Housing

- Optimised supply chain means simple and efficient procurement
- 'Out of a box' solution catered specifically to each house design and delivered direct to site when you need it
- Easily modified and added to post installation offering reassurance for both customer and builder

## Modular Building

- Compact <25mm diameter design means it will go just about anywhere
- Low skill set requirement for the install means lower hourly rates in the factory and on site
- Systemise your total electrical install using a comprehensive product and service solution

## High Density Residential

- MLEX Switch Box provides an intelligent new modular approach to switching light circuits
- Detailed drawing layout for each apartment type ensures the team is fully prepared for the install
- Australian made and factory tested product delivers reliability on big projects

## Commercial Projects

- Integrates with the WireByClick range of products to offer a specialised commercial lighting solution
- Now install both light and power using just one, comprehensive modular solution
- Rewirable product provides total flexibility and control by enabling you to make your own leads at any time



## RESIDENTIAL HOUSING

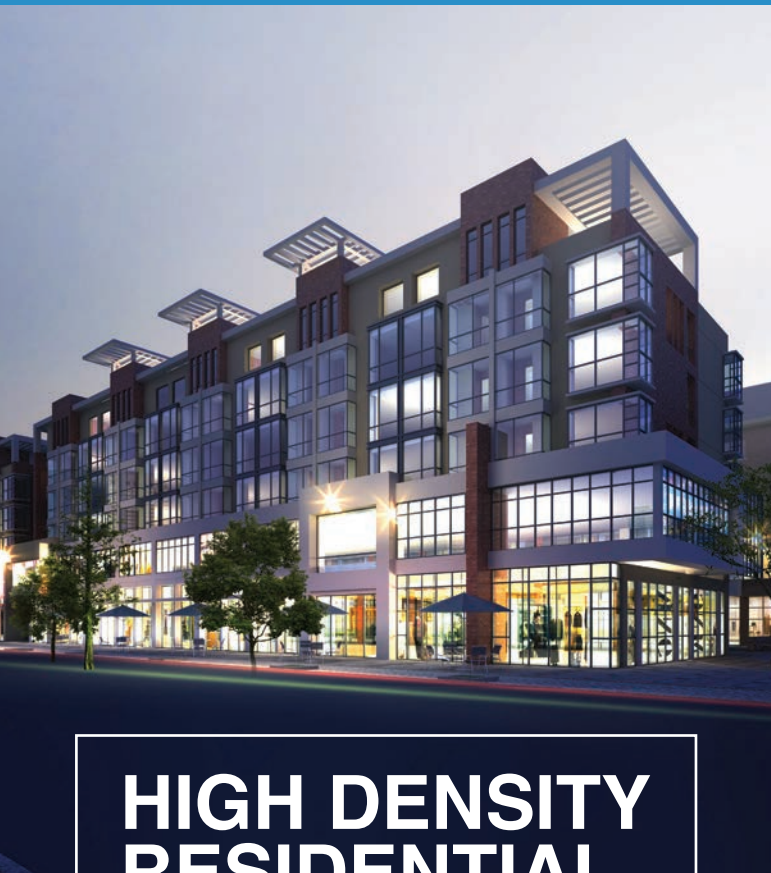


## MODULAR BUILDING



MLEX HAS THE ABILITY TO SEAMLESSLY ADAPT TO PRACTICALLY EVERY INSTALL APPLICATION ACROSS ALMOST ANY CONSTRUCTION CATEGORY.

## HIGH DENSITY RESIDENTIAL



## COMMERCIAL PROJECTS



# MLEX FOR LIGHTING

**MLEX Solutions is a supremely minimal, simple and yet immensely practical lighting solution.**

It's modular nature ensures that a fast and safe installation from the switchboard onwards can be completed with significant reductions in both cable waste and human error.

**Its intelligent design also offers unrivalled flexibility and control** as it offers unlimited switching options and enables users to make their own leads using off the shelf cable to make 'adding to' or 'adapting' the installation exceptionally easy. **Off the shelf accessories can be 'modularised' and therefore incorporated into the installation with minimal fuss** by fitting a MLEX enabler lead which allows it to connect directly into the MLEX backbone.

MLEX products can be used for any lighting application that suits a modular solution such as modular buildings, volume housing or high density residential.

The MLEX Solution also gives users in the commercial sector the option to **seamlessly integrate the market leading WireByClick product** to complete the lighting looms.



---

# MLEX FOR POWER

---



**MLEX fly-leads have been designed to achieve a compact <25mm diameter whilst still delivering to its users a robust, reliable and practical product that can be utilised in almost any installation.**

**The full solution uses minimal parts to achieve a wide variety of outcomes making even the most complicated of installs look relatively straight forward.**

Lead lengths are totally customisable allowing for absolute precision and efficiency on site. Whilst the rewirable component of

the range **allows users to make their own leads using off the shelf cable** ensuring that there are never any delays due running out of leads or having the wrong lead lengths.

This comprehensive power solution now allows you to apply a singular, sophisticated modular power solution for all wiring requirements including **behind your walls, under your floors and at your desks.**

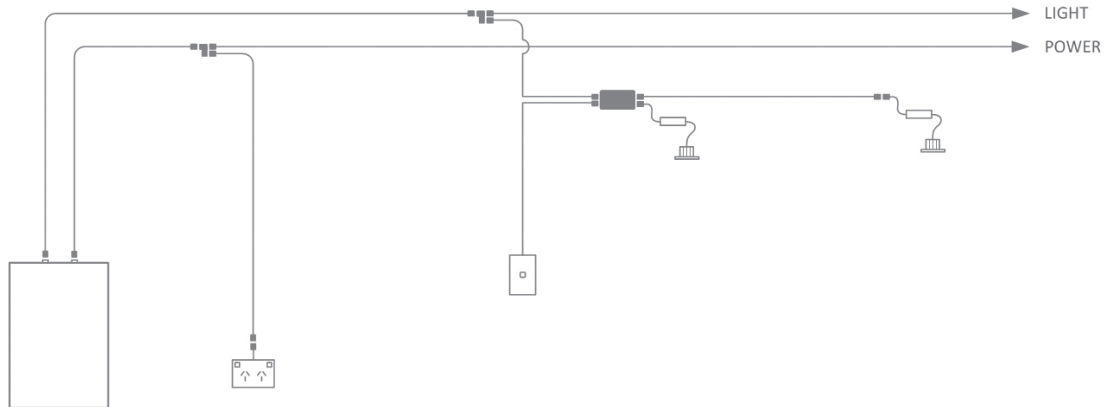


A modern office interior featuring a multi-level design with escalators, white pillars, and a ceiling with large square light fixtures. A blue rectangular overlay is positioned in the center, containing white text. The floor is a light-colored tile with dark square accents.

**MLEX integrates  
with the WireByClick  
range of products to  
offer a specialised  
commercial lighting  
solution.**



# MLEX PRODUCT OVERVIEW



## From the switchboard

The MLEX products allow electricians to now use a modular wiring solution from and including the switchboard out, this is achieved using MLEX as per below:

### > Panel Mount Outlets

The MLEX panel mount female outlets make pre-wiring of switchboards offsite simple and installation onsite fast.



- Requiring only a 25mm cut out
- Available in both 10A and 20A as well as switching versions

### > Female Only Fly Leads

The MLEX female bare end fly leads can be hard wired to switchboards as a substitute to a Panel Mount Outlet.



- MLEX female only leads available in;
  - 0.3m and increments of 1m from 1m up to 10m
  - 10A – 1.5mm
  - 20A – 2.5mm or 4mm
  - Using 2C+E flexible cable

### > Female Hard Wired Starters

The MLEX rewirable female connectors enable users to make up custom leads as a substitute to a Panel Mount Outlet.



- Rewirable Modules available in;
  - 10A – 1.5mm
  - 20A – 2.5mm, 4mm or 6mm

### > Female Hard Wired Starter (WBC)

The WBC Hard Wired 'Starter' socket is the very first outlet for any WBC lighting backbone and is generally hardwired directly back to the main switchboard.



- 20A – 2.5mm, 4mm or 6mm

## Building the back bone

The MLEX products replace manual terminations with a simple modular connection. The rewirable component of this range now offers its users total flexibility and control throughout the course of the install.

The MLEX solution allows for the seamless integration of the WireByClick range of 3Pin (240v) and 5Pin (DALI) products to offer the perfect solution for any commercial lighting application.

## MLEX

### > Connecting Fly Leads

The MLEX pre-wired leads are the most cost effective way to wire any commercial or domestic installation.

#### Moulded Fly Leads



- MLEX Moulded Fly-lead products available in;
  - 1m increments up to 10m
  - 10A – 1.5mm
  - 20A – 2.5mm or 4mm
  - Using 2C+E flexible cable with a male plug and female outlet

#### Rewirable Fly Leads



- MLEX Rewirable Fly-lead products available in;
  - 1m increments up to 50m
  - 10A – 1.5mm
  - 20A – 2.5mm, 4mm or 6mm
  - Using 2C+E cable with a male plug and female outlet

### > Y Junction

The MLEX 'Y' piece is a fast and effective way of installing additional power points or light fittings.



- MLEX 'Y' Piece, 1 male in 2 female out
- Available in both 10A and 20A

### > Rewirable Modules

The MLEX Rewirable male and female connectors enable users to make up custom leads anywhere, at any time using off the shelf cables.



- Rewirable Modules available in;
  - Male Plug or Female Outlet
  - 10A – 1.5mm
  - 20A – 2.5mm, 4mm or 6mm

## WBC 3PIN

### > MLEX/WBC 3Pin Starter

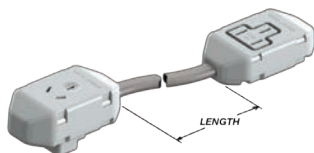
The MLEX/WBC 3Pin starter enables MLEX products to seamlessly integrate with WBC lighting specific products.



- MLEX WBC 3Pin Starters available in;
  - 20A – 2.5mm
  - 1m increments up to 10m
  - Using 2C+E flexible cable with a MLEX male plug and WBC female outlet

### > WBC 3Pin ‘Standard’ Pre-made Lead

The WBC pre-made modular lead forms the backbone of any standard 240v lighting circuit.



- WBC Fly-lead products available in;
  - 0.3m and increments of 1m from 2m up to 5m as standard or custom lead lengths available
  - 20A – 2.5mm
  - Using 2C+E cable with standard adapter (S) module and an outlet (T) module

### > WBC ‘Standard’ Adaptor

The WBC S20 is a standard adaptor outlet to accommodate off the shelf standard AS/NZS 3Pin flex and plugs.

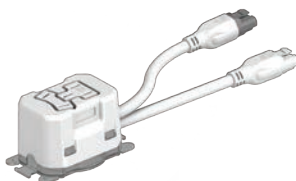


- WBC Standard Adaptor available in;
  - 10A

## WBC 5PIN

### > MLEX WBC 5Pin Starter

The MLEX WBC 5Pin starter enables MLEX products to seamlessly integrate with WBC DALI lighting specific products.



- MLEX WBC 5Pin Starters available in;
  - 20A – 2.5mm, 4mm or 6mm

### > WBC 5Pin DALI Pre-made Lead

The WBC pre-made modular lead forms the backbone of any standard DALI lighting circuit.



- WBC 5Pin Fly-lead products available in;
  - 0.3m and increments of 1m from 2m up to 5m as standard or custom lead lengths available
  - 20A – 2.5mm (DALI - 1.5mm)
  - Using 4C+E cable with adapter (A/5) module and an outlet (T/5) module

### > WBC ‘Stackable’ Luminaire Lead

The WBC stackable luminaire lead allows for multiple light fittings to be connected to a single outlet.



- WBC ‘Stackable’ Luminaire Lead available in;
  - Available in 1.8 or 2.5 metre lengths
  - 10A – 1.0mm
  - Using 4C+E cable

### > WBC STAKA Module

The WBC STAKA Module offers a fast, neat and secure support for the connection of 4 or more light fittings back to a single connection point.



- Can facilitate up to 6 WBC modules
- Secure leads with fastener (zip tie)
- Fix to catenary or anchors



## Incorporating Switches

The MLEX solution has a comprehensive array of switching options available using a combination of specialist products.

### > Switch Connecting Fly Leads

The MLEX pre-wired switching leads are the most cost effective way to incorporate switches into any commercial or domestic installation.

#### Switching Moulded Fly Leads



#### Moulded

- MLEX Switching Moulded Fly-lead products available in;
  - 1m increments up to 10m
  - 10A – 1.5mm
  - 20A – 2.5mm
  - Using 2C flexible cable with a male plug and female outlet

#### Rewirable Switching Fly Leads



#### Rewirable

- MLEX Switching Rewirable Fly-lead products available in;
  - 2Pin for standard switching or 3Pin for 2 Way switching options
  - 1m increments up to 50m
  - 10A – 1.5mm
  - 20A – 2.5mm
  - Using 2C & 3C flexible cables with a male plug and female outlet

### > Switch Enabling Fly Leads

The MLEX switch enabler leads can be pre-fitted to light switches and sensors to eliminate any connections required onsite.

#### Switch Enabler Leads



#### Male Only

- MLEX Switch Enabler Leads are available in;
  - 1m increments up to 10m
  - 10A, 1.5mm
  - 20A 2.5mm
  - Using 2C flexible cables with a male outlet and bare ends only

#### Rewirable Switch Enabler Leads



#### Male Only

- MLEX Rewireable Switch Enabler Leads are available in;
  - 2Pin for standard switching or 3Pin for 2 Way switching options
  - 1m increments up to 50m
  - 10A – 2.5mm
  - 20A – 2.5mm
  - Using 2C & 3C flexible cables with a rewirable male plug only for standard switching

---

### > Switch Y Junction

The MLEX Switching 'Y' piece is a fast and effective way of installing additional parallel switching or DALI feeds.



- MLEX 'Y' Piece, 1 male in 2 female out
- Available in both 10A and 20A

---

### > Switched Rewirable Modules

The MLEX Switching Rewirable male and female connectors enable users to make up custom leads anywhere, at any time using off the shelf cables.



#### Rewireable Modules

- Rewireable Modules available in;
  - Male or Female
  - 2Pin for standard switching or 3Pin for 2 Way switching options
  - 10A – 1.5mm
  - 20A – 2.5mm
  - Accommodating 2C flexible cables for standard switching
  - Accommodating 3C flexible cables for 2-Way switching options

---

### > MLEX Modular Switch Box

The MLEX Modular Switch Box provides a simple solution for switching of lighting circuits in any installation.



- MLEX Modular Switch Box available in;
  - 10A – 4 or 6 Pole
  - 20A – 4 or 6 Pole
  - Custom configurations
  - Accommodates standard, 2-way and intermediate switching

---

## Adding Accessories

**Any off the shelf accessory such as a light fitting, switch plate or general power outlet can be modified to suit the MLEX solution by simply fitting one of our enabler fly leads.**

---

### > Enabler Fly Leads

#### Appliance Leads

The MLEX Universal Appliance Lead can be pre-fitted to light fittings and fixed appliances for a simple on site installation.



- MLEX Appliance Lead products available in;
  - 0.3m and increments of 0.5m from 1m up to 2.5m
  - 10A – 1mm
  - Using 2C+E ordinary duty flexible cord with a male adapter and bare ends only

#### Male Only Fly Leads

The MLEX Male Only Enabler Fly Lead can be pre-fitted to power points and accessories to eliminate terminations onsite



- MLEX Moulded Fly-lead products available in;
  - 0.3m and increments of 1m from 1m up to 10m
  - 10A – 1.5mm
  - 20A – 2.5mm or 4mm
  - Using 2C+E flexible cables with a male plug and bare ends only









**MLEX**<sup>™</sup>  
SOLUTIONS

# MLEX

**SUPPORTING  
AUSTRALIA'S  
NEWEST PROJECTS**

# MLEX AS A 'TURN KEY' SOLUTION

**By utilising MLEX Solutions to also source all associated accessory requirements such as switch boards, light fittings, switches and general power outlets, you will receive the benefit of a proven, comprehensive and trusted system for the successful design, manufacture, procurement and delivery of the entire modular electrical install.**

As your turn key provider, MLEX Solutions will;

## 1. Consult With Key Personnel

Gathering key personnel from both parties together to discuss the nature of the project in more detail is an important first step. Outcomes from this initial consultation could include:

- Identifying and understanding your objectives
- Demonstrating the capabilities of the MLEX Turn Key Modular Solution
- Sharing our experience in completing successful modular installations

## 2. Provide Detailed Marked Up Drawings

Based on findings from the initial consultation, the MLEX Drawing Team will generate detailed marked up drawings specific to your project complete with:

- Product images
- Product codes
- Product quantities

Each drawing uses colour coded stencils that allow these drawings to be referenced on site as part of our clever delivery system to ensure that when product arrives, you know what it is, where it is and where it goes.

## 3. Collate Product and Modularise Accessories

With Marked Up Drawings approved, we then collate your product and modularise your electrical solution by:

- leveraging our strong relationships with leading lighting and accessory brands to source the best product at the best prices for use on your project
- facilitating the pre-fitting of the MLEX connector leads to all electrical accessories to ensure they are 'modularised' and ready for integration into the MLEX solution

## 4. Pick, Pack and Deliver To Location

Our carton labels feature product images, codes and quantities to ensure full visibility is afforded to the team on site. Importantly, the labels are also colour coded to correspond directly with the Marked Up Drawings so that stock can be easily distributed across the site in accordance with the electrical design.

Once packed, the MLEX product, associated accessories and relevant drawings (your entire electrical modular solution) can be despatched as one order, in full and on time direct to the desired location.





**1. Consult  
With Key  
Personnel**

Combining your needs  
and our expertise

**2. Provide  
Detailed  
Marked Up  
Drawings**

The road map for the  
perfect installation

**3. Collate  
Product and  
Modularise  
Accessories**

All accessories are  
seamlessly integrated

**4. Pick,  
Pack and  
Deliver To  
Location**

One solution, one  
delivery, direct  
to location





The quality of our product has little to do with what work we've put into it ... but everything to do with what our customers get out of it.

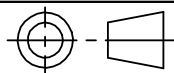
#### QA INSPECTION REQUIREMENTS

NO. OF CRITICAL DIMENSIONS

SAMPLE QUANTITY TO CHECK

BATCH SIZE

REJECTION CRITERIA: REJECT BATCH IF ANY OF THE INSPECTED SAMPLES HAVE THE CRITICAL DIMENSION OUTSIDE OF TOLERANCE



#### GENERAL TOLERANCES

0 =  $\pm 1.0\text{mm}$   
0.0 =  $\pm 0.5\text{mm}$   
0.00 =  $\pm 0.2\text{mm}$   
0.000 =  $\pm 0.1\text{mm}$   
ANGULAR  $\pm 1^\circ$

UNLESS OTHERWISE STATED

SCALE 2:1

SHEET 1 OF 1

DO NOT SCALE  
DIMENSIONS ARE  
IN MILLIMETRES

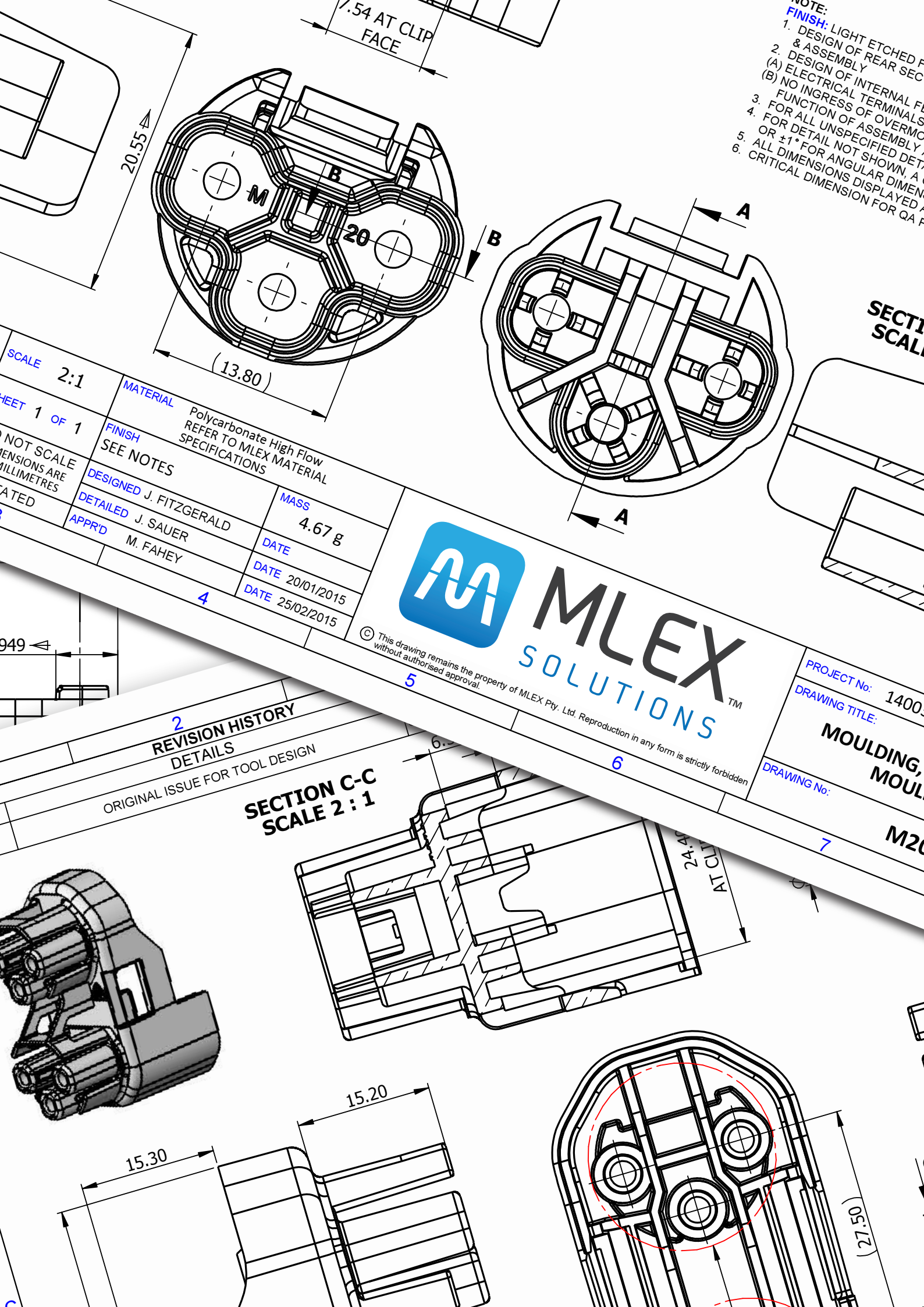
MATERIAL Polycarbonate  
REFER TO MATERIAL SPECIFICATION

FINISH  
See Notes

DESIGNED J. FITZGERALD

DETAILED J. SAUER

APPR'D M. FAHEY





A small blue horizontal bar is positioned above the contact information.

PO Box 172,  
Lonsdale DC SA 5160  
**T** 1300 546 449  
**F** +61 (0)8 8311 6411  
**E** [sales@mlexsolutions.com](mailto:sales@mlexsolutions.com)  
**www.mlexsolutions.com**