

“Real easy to work with and the products and service are first rate quality”

Bernie Campbell
Shepherd Electrical

Canberra Airport (Molonglo Place)

This 35,000 sqm commercial office building is located in the Brindabella Business Park precinct and houses a high profile Government Department. This development is twice the size of any other building in the precinct, with typical floor plates of 8,000m².

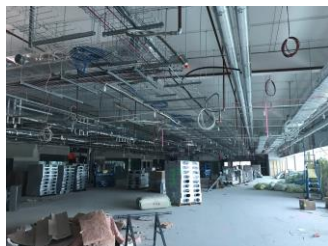
With a 5 Star Green Star rating, the building incorporates solar power, generator back up, advanced UPS and battery redundancy systems, smart lighting, water recycling and more.

The project comprised of 7 floors and more than 8,000 DALI light fittings in total. To facilitate simple and efficient onsite installation, MyModular provided detailed marked up drawings, complete with a bill of materials for each floor zone. MyModular's comprehensive 5PIN modular lighting loom solution was supplied for all general lighting, as well emergencies and exits.

MyModular products are made locally, which reduced lead times from 12 weeks to 4 weeks for all lead orders.

“We were really happy with the outcome and will definitely use MyModular solutions moving forward”

Bernie Campbell
Shepherd Electrical



Client

Shepherd Electrical

Project Scope

7 Floors and 8,000 DALI Light Fittings in total

Location

Canberra, ACT

Products Used

15,000+ WBC Products

Tags

WBC, Light

WIRE BY CLICK™