



## **Organisational Advantage & Capability Statement**

July 2022



□ OUR PURPOSE IS TO □

# SIMPLIFY ELECTRICAL

For too long it's been accepted that wiring is hard work. Fault rates are high, project scope creep is creating unnecessary stress, and our people and teams often find themselves facing unnecessary risk during installation as a result. We believe there must be a better way, and are here to offer products that make things simpler and safer, while saving time and money.

**We believe that when it comes to providing electrical solutions — simple is better.** That is why MyModular are the only, local end to end manufacturing company providing modular lighting and power to the construction industry because we believe there's **always** a better way, and we can find it **together!**



Turnkey Project  
Solutions



Smarter Resource  
Allocation



Best in Class  
Safety



Future Proof your  
Investment

# OUR PARTNERS

We're excited to support our partners by delivering simpler, safer, more effective electrical solutions.



Heyday Group



FREDON



PERIGON



BAE SYSTEMS



esco  
industries



# OUR PROMISE TO YOU



## Simplifying Solutions

Our award-winning modular electrical solutions come with a commission fault rate approaching zero - 0.00002 to be exact.

Available for all commercial and residential wiring and lighting, our solutions achieve this by removing the complex number of tools, compartments and terminations required by traditional methods.



## Revolutionising Safety

We've had 0 product-related injuries despite installing over 3 million products, spanning hundreds of jobs, over more than a decade.

That's because we've designed our products to reduce complexity and remove the tricky installation requirements that put people at risk.



## Redefining Value

If reducing costs is important, look at the bigger picture with MyModular.

The electrical industry has been looking at it all wrong - it's not about the product, it's about the total cost of installation. When you look at the speed, ease and safety our products provide, it becomes a no-brainer.



## Reimagining the Future

With an average annual growth rate of over 25% year-on-year, we're proud to be an Australian-made and owned business that has risen to become world leaders with products like MyLite™ - the world's safest and smartest low-voltage temporary lighting solution.

# SOUND FAMILIAR?

Traditional electrical products and practices are costing builders, specifiers, and contractors a fortune. Even more concerning are the the often overlooked risk of failing to account for the big picture when it comes to electrical projects.

Simplifying electrical requires transparency and accountability. Therefore to demonstrate the true cost often resulting from the old way of doing business, MyModular created the Connection Calculator\*.

This free tool allows you to calculate the real cost of cutting corners. We refer to these negative risks The After-Shocks.

Read on to see how **Australia's #1 Manufacturer of Modular Wiring Solutions** works to provide a better way to protect you and your project, and put simply: a better result.

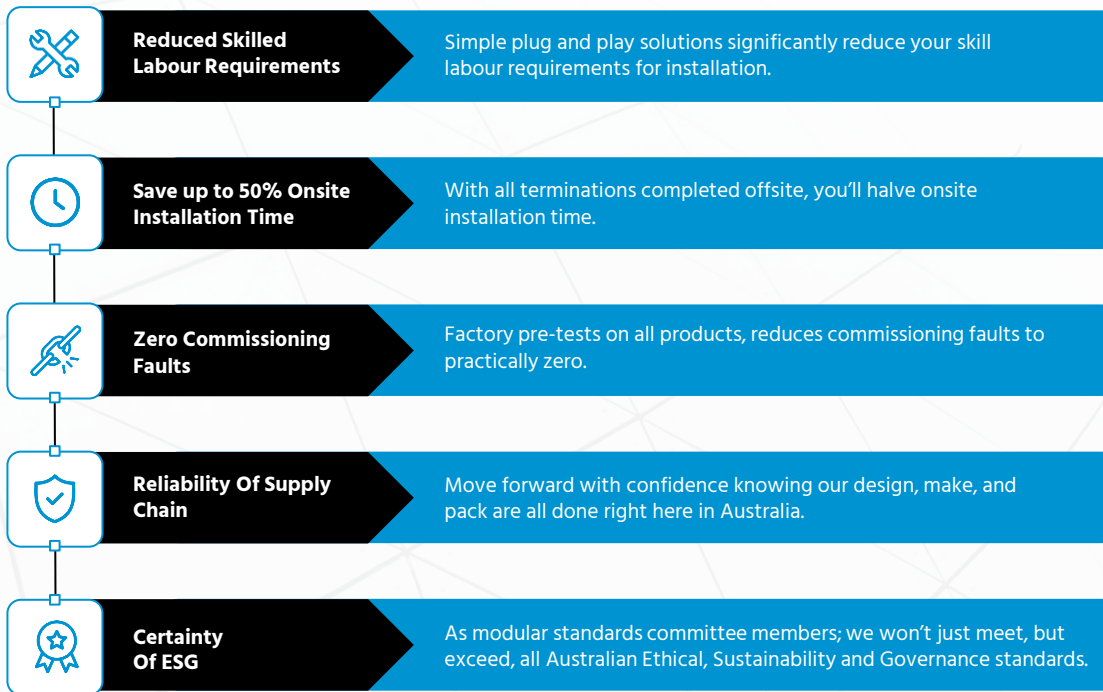
*Please contact us at EMAIL to request your **FREE CONNECTION CALCULATOR** tool for scoping your next electrical project*



# PEACE OF MIND - THE BIG PICTURE BENEFIT



With a similar upfront cost when you average product and installation, the real differences with MyModular become obvious when you see the big picture.



# MY MODULAR HAS THE SOLUTION FOR YOU



## Supply

- Modular switchboard connections including panel mount and female fly lead enablers
- Turnkey Modular Load centres



## Connect

- Modular Feeds
- Modular Interconnecting leads
- Modular marshalling points
- Modular Light and Power



## Enable

- Luminaire leads supplied to manufacturers
- Enabling sensors, switches etc.
- Modularising off the shelf power points
- Supply of turnkey accessories all pre-enabled



## Bespoke

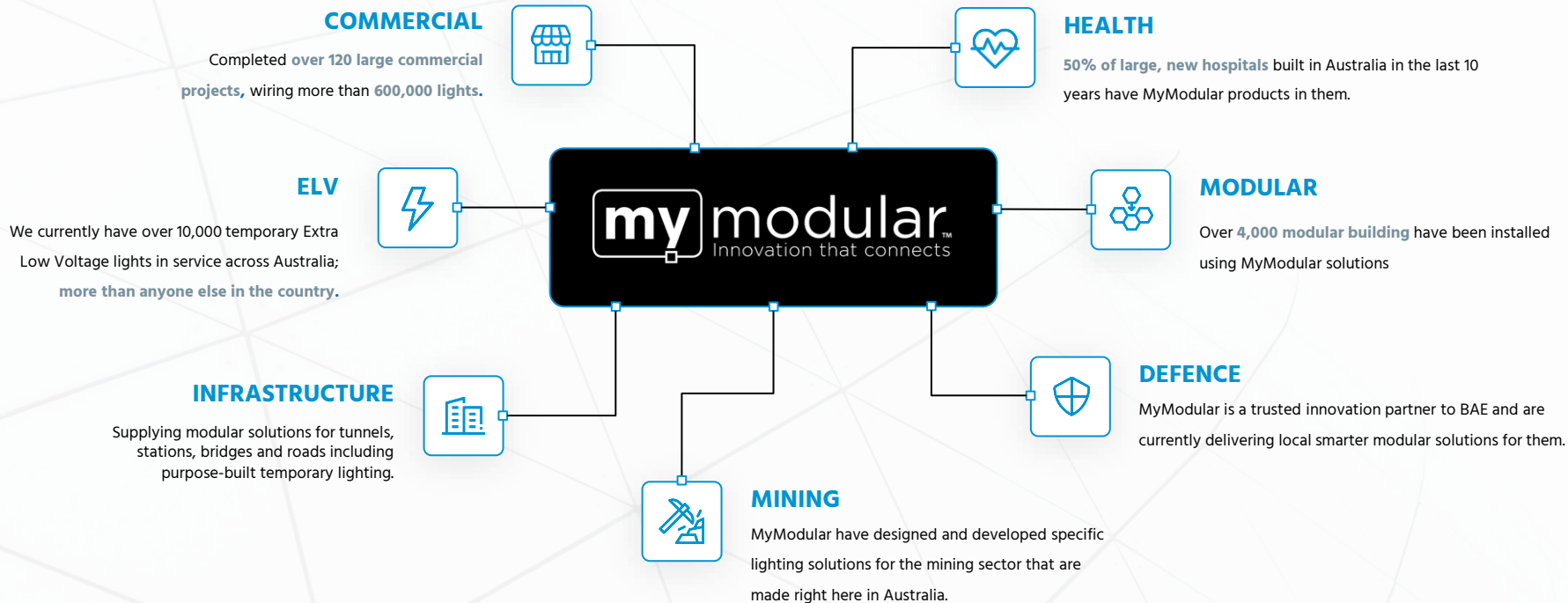
- Prefabrication of typical hardwired solutions
- Contract manufacture of others' products
- Customised solutions to suit your needs



## ELV

- Extra Low Voltage (48VDC), Australia's safest temporary lighting solutions

# □ EXPERIENCE YOU CAN TRUST □



# Sample Projects Case Studies



## ■ LARGE COMMERCIAL PROJECTS ■

# BARANGAROO (INTERNATIONAL TOWERS)

### Situation

Sydney's largest urban renewal project, offering 280,000sqm of office space accommodating up to 23,000 workers / have pre-tested lights installed onto the project / quick and simple installation.

### Task

Provide a modular lighting system that can be used as general lighting throughout / Use a combination of 5PIN and 3PIN modular lighting loom solutions to be supplied / provide them with drawings to help make the installation easy.

### Action

MyModular's 5PIN modular lighting loom solution was supplied for all general lighting in the building / over 7 floors 8,000 DALI light fittings were installed in total / Have modular lighting installed in the base building and multiple tenancy fit outs across the three office towers.

### Result

Providing more than 50,000 DALI Light Fittings across 130 floors in total / Completing detailed mark up drawings complete with bill of materials for each floor / As products were made locally; they were supplied within 3-4 weeks.



**Client**  
Stowe Australia

**Project Scope**  
50,000+ DALI Light Fittings

**Location**  
Sydney, NSW

**Products Used**  
130,000+ WBC Products  
300,000m of WBC Cable

**Tags**  
Commercial, WBC, Light

*"It's an asset to our business to have such a cost competitive, locally owned company who manufacture in Australia."*

Phil Hooper Construction Manager - Stowe Australia

## □ LARGE HOSPITAL PROJECTS □

# VICTORIA HEART HOSPITAL

### Situation

Multiple trades climbing all over each other while working in areas on site, resulting in inefficiencies for completing areas / commissioning faults on a large, complex project such as a hospital is significantly great / on a large complex project, any areas of electrical where they can simplify is a massive benefit so they can spend time doing everything else on the to do list.

### Task

A plug and play system which was user friendly / reduce onsite labour & risk by having no terminations on site / confidence in a strong made supply chain by an Australian made company / confidence in a pre-tested product to significantly reduce commissioning.

### Action

Full set of coordinated electrical shop drawings making it easy for install team to use / a modular solution which allowed them to expedite areas quickly before other trades.

### Result

A tailored delivery solution which allowed for efficient onsite handling / a significant reduction in commissioning for lighting and power to rooms / value for money.



### Client

Stowe Australia

### Project Scope

Turnkey soft wiring solution for light and power

### Location

Melbourne VIC

### Products Used

100+ boards, 7,000+ Lights and 6,000+ Power points

### Tags

Health, Light, Power, WBC, MLEX

*The products were simple to use, the plug-and-play design significantly reduced the install time, allowing us to expedite works in areas that wouldn't be possible with traditional wiring systems."*

Michael Bruns Project Manager - Stowe

## TEMP. LIGHTING PROJECTS

### BLACKTOWN HOSPITAL TEMP. LIGHTING

#### Situation

New 9 story services building / plug and play lighting solution / flexibility for the products in the future / Have a safer construction site, with low voltage control boards and extra low fittings which provide for a safer site.

#### Task

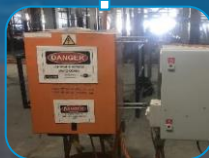
Reduce onsite risks and extra labour costs through a modular lighting solution / Provide temporary lighting to the construction site / have a product that is reusable and recyclable.

#### Action

ELV-Lite was selected to be used as temporary construction lighting for the hospital / Plug and play modular cabling system for greater flexibility and faster installation for temporary lighting.

#### Result

Using extra low voltage light fittings and control boards for all temporary lighting / having a solution that is flexible and has faster installation / provided 650 temporary lighting fittings on the project.



**Client**  
Stowe Australia

**Project Scope**  
650 Temporary Light Fittings

**Location**  
Blacktown, NSW

**Products Used**  
2,000+ ELV-Lite Products

**Tags**  
Health, Temp. Lighting, ELV

*“The efficiency and simplicity of the ELV-Lite system has provided us with both a solution and an investment”*

Nathan Hemmings Project Manager - Stowe



**Contact us today to discuss finding a better way  
to **simplify your electrical needs.****

Street Address:  
Plant 5, 6 Sheriff's Road, Lonsdale South Australia 5160

T: 1300 546 449

[sales@mymodular.com](mailto:sales@mymodular.com)

[www.mymodular.com](http://www.mymodular.com)