

TEMP. LIGHTING PROJECTS

WESTMEAD HOSPITAL

Situation

Biggest health infrastructure redevelopment in the state, costing \$1 billion. Provide temporary lighting to the Westmead Hospital Project by using a 'plug and play' modular cabling system so the time of installation is cut down drastically meaning the project is completed quicker.

Task

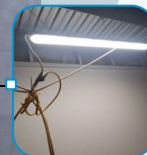
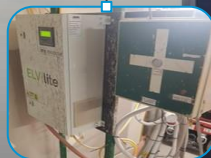
A plug and play cabling system with Australian made, yellow sheath cable. Low voltage to extra low-voltage control boards, extra low voltage light fittings. Create a safer environment, more flexibility and faster installation of temporary lighting.

Action

A re-usable modular lighting solution that Heyday can reuse of multiple projects, using the newest product line; ELV-Lite. Modular lighting solution which allows workers to install them quickly on site.

Result

Flexible solution which allowed for faster installation of temporary lighting, value for money as it is a reusable product.



Client
Heyday 5 (NSW)

Project Scope
Temporary Light Fittings

Location
Westmead, VIC

Products Used
2,500+ ELV-Lite Products

Tags
Health, Temp. Lighting, ELV

Westmead
Health Precinct

“The MyModular ELV solution has been fantastic, we’ve used others, but these are far superior in every way. Onsite we have literally had no issues with them at all and will certainly be using these moving forward on all of my projects.”

Michael McGeehan Project Manager – Heyday Group

Contact sales@mymodular.com for additional information on any of our 22+ Large Hospital Projects