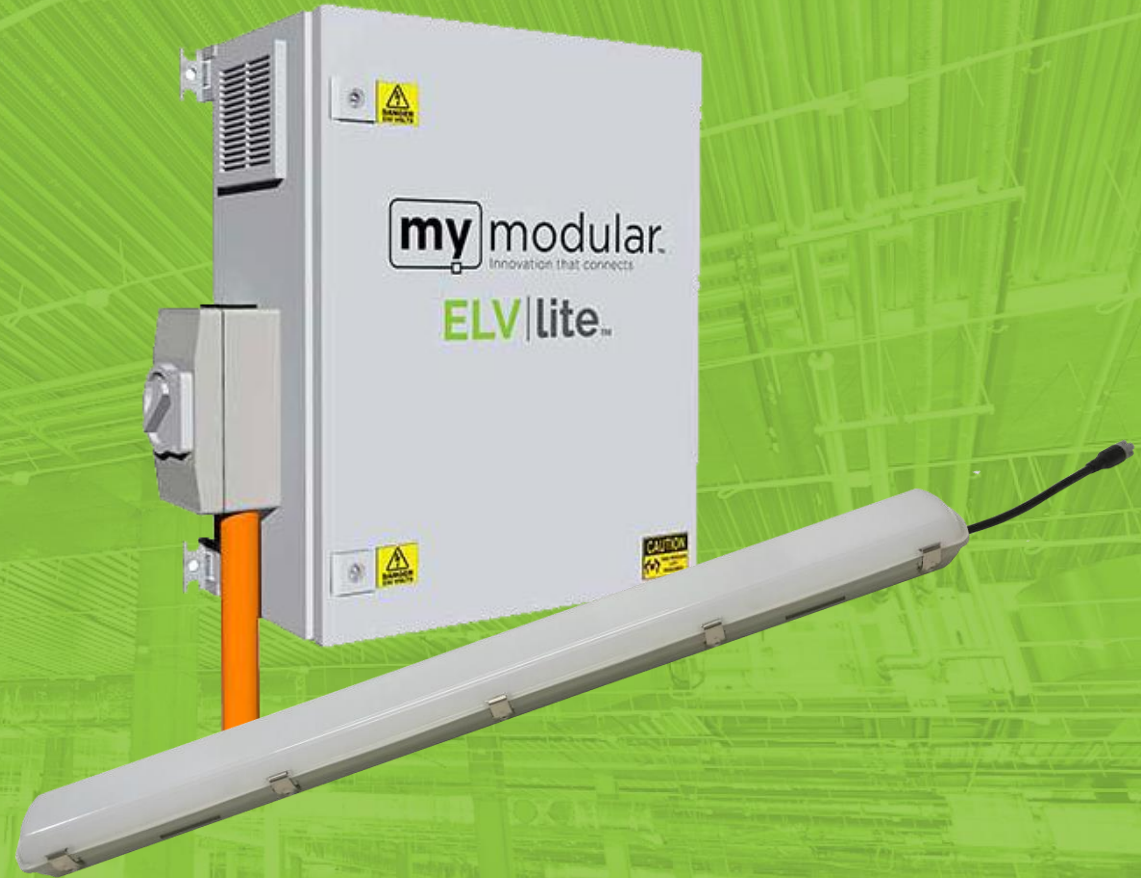


ELV|lite™

**Safer, Faster,  
Simpler** extra low  
voltage solution for  
**Temporary  
Lighting**



**my** modular™



**Innovation  
that connects**

## If there is a safer solution, why wouldn't you use it?

You certainly wouldn't buy your team a 1star ANCAP-rated work vehicle when there is a 5Star available!

Temporary lighting is no different, by installing an ELV solution over traditional 240V you effectively eliminate the risk of electrocution.

If safety is your first priority, **ELV isn't an option it's an obligation.**



**ELV|lite**

We currently have over 10,000 temporary Extra Low Voltage lights in service across Australia;  
more than anyone else in the country.

	<b>Safety</b> Safe working voltage (<50 Volts) significantly reducing the risk of dangerous electric shock.	<b>Reliability</b> Prefabricated, moulded plugs and pre-enabled fittings that are all assembled and tested in a factory environment.	<b>Speed</b> Plug and play quick connect modular wiring solution reducing installation onsite by up to 70%	<b>Flexibility</b> Temp. lighting is constantly changing on construction sites, a modular ELV solution makes changes onsite faster, simpler and safer.	<b>Reuse &amp; Recycle</b> The ELV-Lite solutions are designed to be easily installed and uninstalled, packed up and re-used on future projects.	<b>No Waste</b> Using modular leads means there is no waste during install and more importantly no waste when being removed.
<b>Traditional 240V</b>	X	X	X	X	X	X
<b>ELV</b>	✓	✓	✓	✓	✓	✓

### SUPPLY boards



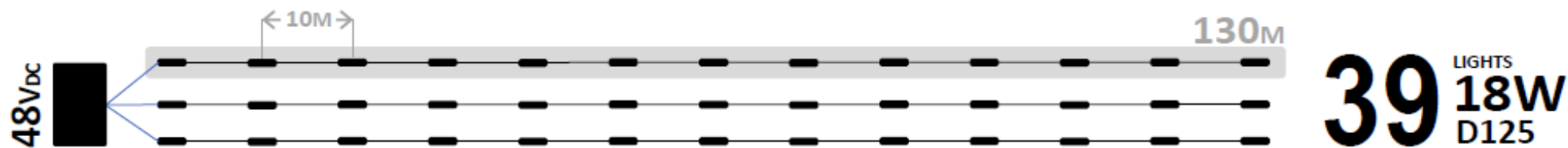
### ILLUMINATE lights



### CONNECT leads



**my**modular. = **LESS BOARDS, LESS LIGHTS, LESS LEADS** and **MUCH LESS LABOUR**



## Competitor One



## Competitor Two



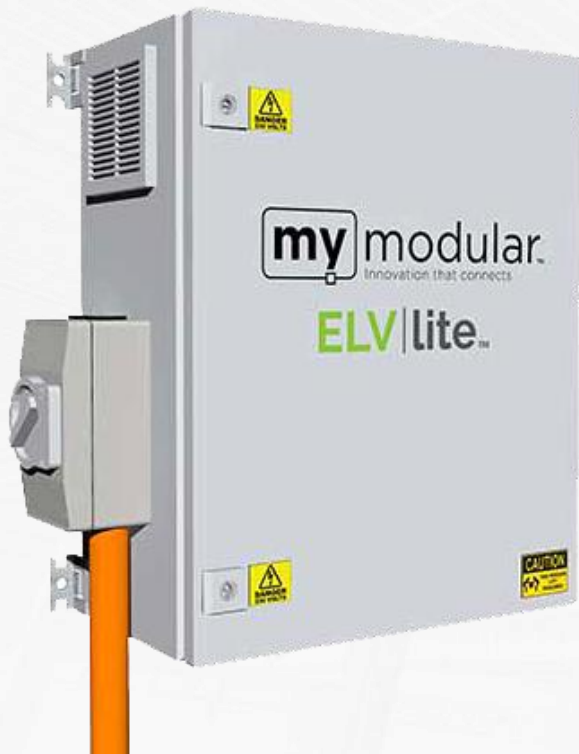
how do we compare. (@ 2.7M mounting height)

	MyModular	Competitor One	Competitor Two
Boards	<b>1</b> (48VDC)	<b>4</b> (24VDC)	<b>7</b> (24VDC)
Lights	<b>39</b> (18W)	<b>51</b> (33W)	<b>78</b> (33W)
Leads	<b>39</b>	<b>51</b>	<b>78</b>
Self-Testing Lights	✓	X	X
Control / Schedule Lights	✓	X	X
Sensing Technology	✓	X	X



# Supply

The safest temporary solution **all starts with the supply board**. Our boards have been designed and **developed here in Australia** specifically for our market.



Operating input voltage of 190 to 260VAC with regulated **48 Volt DC SELV** output.

2 wire system which can still power the EM batteries when the lights are turned off.

Emergency Battery discharge test from the push of 1 button

**Superior safety** with 3 Layers of protection:

- Over voltage
- Overload
- Thermal

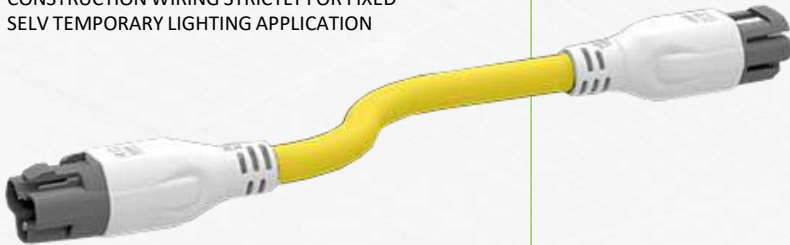
Emergency lighting test timer and dimming option for standard fitting

Supports up to **39x Gen3 18W fittings per board**.

# Connect

Our ELV-Lite solution utilises the **best connectors** and cable on the market, delivering a high quality installation that is **reusable, flexible and fast**.

V90 ELECTRIC CABLE 2C x 4mm WARNING:  
CONSTRUCTION WIRING STRICTLY FOR FIXED  
SELV TEMPORARY LIGHTING APPLICATION



## ELV Leads

**Made in Australia** using market leading, MLEX over-moulded connectors for **ultimate durability** and a 2C, 4mm<sup>2</sup> Australian Made, **certified cable** for superior performance.

- Yellow pre-labelled sheath to eliminate taping onsite
- Supplied in 5.0M + 10.0M options
- Includes clip to avoid unauthorised disconnection without a tool
- Integrates with MLEX ELV accessories shown here for fast, simple installation and distribution onsite.



### 'Y' Pieces

One in, two out ELV distribution block for connection of light fittings or splitting of circuit.



### Modular SB Boxes

ELV 4 gang (one in three out) or 6 gang (one in five out) marshalling box/distribution block.



### Rewireable Modules

Rewireable male and female outlets which can be used to make leads onsite in case of emergency using off the shelf cables.

# Tamper Proof Clip - come standard with each MLEX lead

## PERSONS INSTALLING OR MODIFYING

MLEX installation couplers must be installed, tested and modified in accordance with AS/NZS 3000 Wiring Rules.

## INSTALLATION LOCATION

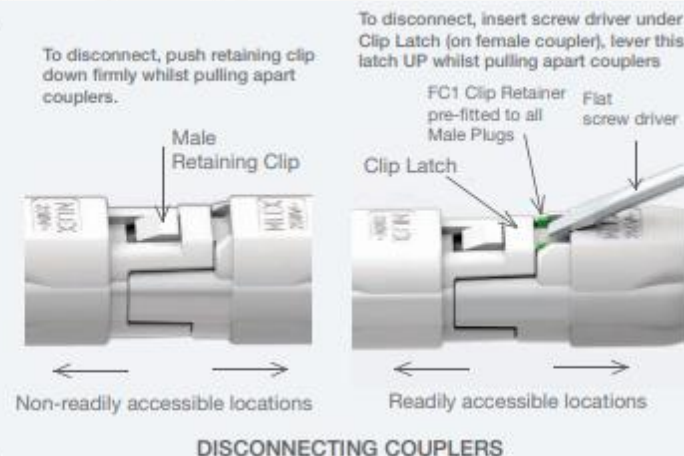
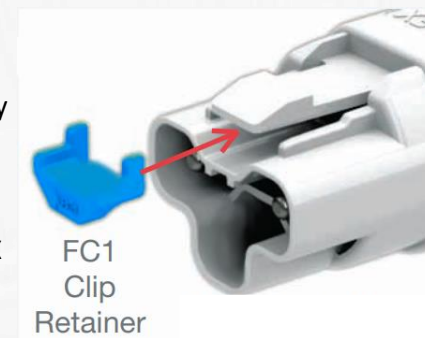
MLEX products are to be installed in indoor, readily or non-readily accessible locations (AS/NZS 3000 cl. 1.4.2). For readily accessible locations MLEX products can be used only if an FC1 Clip Retainer is fitted to all male coupler plugs in this location by applying the clip. The coupler can only be disengaged by a tool.

## USE WITH OTHER SYSTEMS & DANGEROUS COMPATIBILITY

MLEX installation couplers are NOT for use with any other coupler system. DO NOT attempt to plug any non MLEX coupler or plug into any MLEX product. Compliance with IEC 61535 and/or AS/NZS 61535.1 does not automatically prevent dangerous compatibility.

## CONNECTION & DISCONNECTION

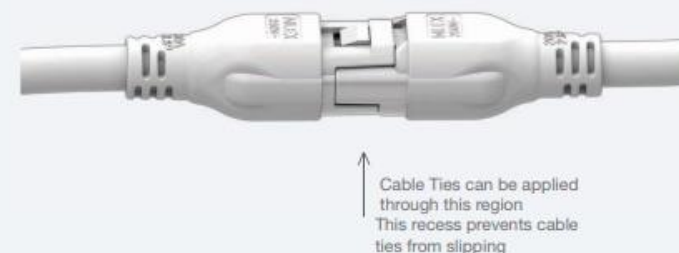
This MUST NEVER be done so under load in accordance with AS/NZS 3000 and 61535.1. ALWAYS ISOLATE circuit prior to any works.



## MOUNTING & FIXING INSTRUCTIONS

### STANDARDS REQUIREMENTS

All couplers, attached fittings and attached cables must be suitably mounted and secured in accordance with AS/NZS 3000 Wiring Rules. Ensure couplers, cables and any connected plugs and flexible cords are never under any excessive strain



# Illuminate – Emergency Batten

We have partnered with market **leading LED manufacturers** to develop dedicated 48VDC light fittings so we can deliver the **ultimate turnkey ELV solutions** for our customers.



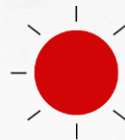
## Light Indication:



Green = Battery is charging or fully charged and functional.



Blinking green = Battery level is low



Blinking red = Faulty battery

**ELV\_G3/18W.1200\_IP65-EM 1500LM. 18 watt 48 volt VDC input:**

1200mm IP65 Emergency LED Light Fitting. 2,800Lm output in normal mode and 1,500Lm output in Emergency mode, that is up to 3 x most ELV Emergency fittings on the market.

The discharge test mode can be activated without any effect to other lights on the same circuit. A visible indicator LED will show the battery discharge test result when the test time has been completed.

**3 year fitting warranty and 2 year battery warranty**

**1,500 Lumens** in emergency operations

C0:D200 C90:125



# Illuminate – Standard Batten

We have partnered with market **leading LED manufacturers** to develop dedicated 48VDC light fittings so we can deliver the **ultimate turnkey ELV solutions** for our customers.



**ELV\_G3/18W.1200\_IP65. 18 watt 48 volt VDC input:**  
1200mm IP65 Standard LED Light Fitting. Normal operation is at 18 watts giving 2,800Lm output. If more light is required the fitting can be changed to 27 watts giving a huge 4000lm output, this is done via dip switches on the driver within the light.

**3 year fitting warranty**

**2,800 Lumens** in standard operations

More than 4,000 Lumens on 27W mode (Via DIP switch on the driver)

**ELV\_G3/MS Optional Microwave sensor for Standard fittings. Dim, Standby or Turn off light when no one is present.** The sensor can be added to any Generation 3 ELV Lite Standard fitting at any time. Setting can be adjusted by DIP switch. Sensors with remote setting adjustments are also available.

**50%** in power savings



# Illuminate - Exit Light, Nurse Call & Fire

## Feature:


- Designed for ELV-Lite temporary lighting system
- Modular structure configuration
- No stroboscopic
- Easy and flexible mounting



We have emergency exit light fittings (internally illuminated) as well as exit decals that have been specially designed to fit directly under the Emergency Fittings for a simpler installation onsite.



Parameter	Description
Input:	38-48VAC/50-60Hz
Light Source:	18pcs SMD 2835
Viewing Distance:	16m
Input Power:	5.5w
Emergency Power:	2.0w
Luminance Flux:	≥ 100LM
Emergency Luminance Flux:	≥ 100LM
CCT:	6500k
Battery:	LFP 6.4V 1.5Ah
Emergency Duration:	≥ 2 hours
Degree of Protection:	IP65
Charge Time:	≥ 16hrs
Case Materials:	Poly Carbonate
Weight:	0.72kg

Self-Contained Emergency Lighting		ELV lite	
Model: ELV_G2/EXIT_LIGHT_16m_IP65			
Mains: AC 38-48V -	If L1 Connected	X	1 AEF 180
Lamp Type: SMD LED White	If L1 not Connected	X	0 AEF 180
Wattage: 4.0W    ta: 0°C to 40°C			
Charge: 16H Battery: LFP 6.4V 1500mAh			
Comply with AS/NZS60598.2.22 and AS/NZS 2293.3	Emergency Classification: C <sub>0</sub>	D10	IP65 

# Illuminate - Flood Light

We have partnered with **market leading LED manufacturers** to develop dedicated 38-48VAC/DC light fittings so we can deliver the **ultimate turnkey ELV solutions** for our customers.



**6,000 Lumens**  
in standard  
operations

**ELV** | **lite**™

## ELV\_G2/50W.Flood\_IP65, 46 Volt 50 Watt LED Flood Light

50W ELV IP65 flood light fitting has been developed specifically for temporary construction projects and to be used in conjunction with the MyModular ELV-Lite solution.

Parameter	Description
Input:	38-48VAC/50-60Hz
Light Source:	18pcs SMD 2835
Viewing Distance:	16m
Input Power:	5.5w
Emergency Power:	2.0w
Luminance Flux:	≥ 100LM
Emergency Luminance Flux:	≥ 100LM
CCT:	6500k
Battery:	LFP 6.4V 1.5Ah
Emergency Duration:	≥ 2 hours
Degree of Protection:	IP65
Charge Time:	≥ 16hrs
Case Materials:	Poly Carbonate
Weight:	0.72kg

Innovation  
that connects

# Illuminate - Highbay

We have **listened to the needs of our customers** and are pleased to announce the **latest product** in our ELV-Lite range! Our **LED Highbay** is the perfect fitting for areas with high ceilings.



**8,000 Lumens**  
in standard  
operations

**ELV\_G3/50W.Highbay\_IP65, 48 Volt 50-Watt LED Highbay** Light with optional sensor

Product Description UFO Highbay 50W ELV IP65 light fitting, this fitting has been developed specifically for temporary construction projects and to be used in conjunction with the MyModular ELV-Lite solution.

## Technical Specifications

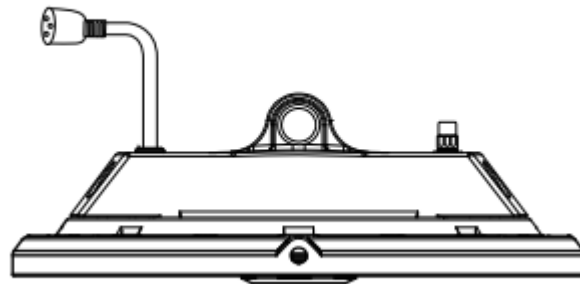
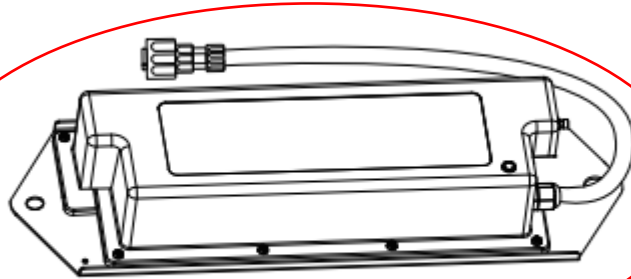
Parameter	Description
Lumen Output (Standard)	>8,000 Lumens
Lumen Output (Battery Back Up)	>2,500 Lumens
Colour Temperature	5000K
Beam Angle	110 °
Supply Voltage	38-48V AC / DC (SELV)
Emergency Classification	C0: D160 C90:D160
Input Current	< 1.1 A
Input Power	50W
Degree of Protection	IP65, IK07
Equipment Classification	III
Warranty	3 Years (EM Battery 2 Years)
Sensor	Optional, available



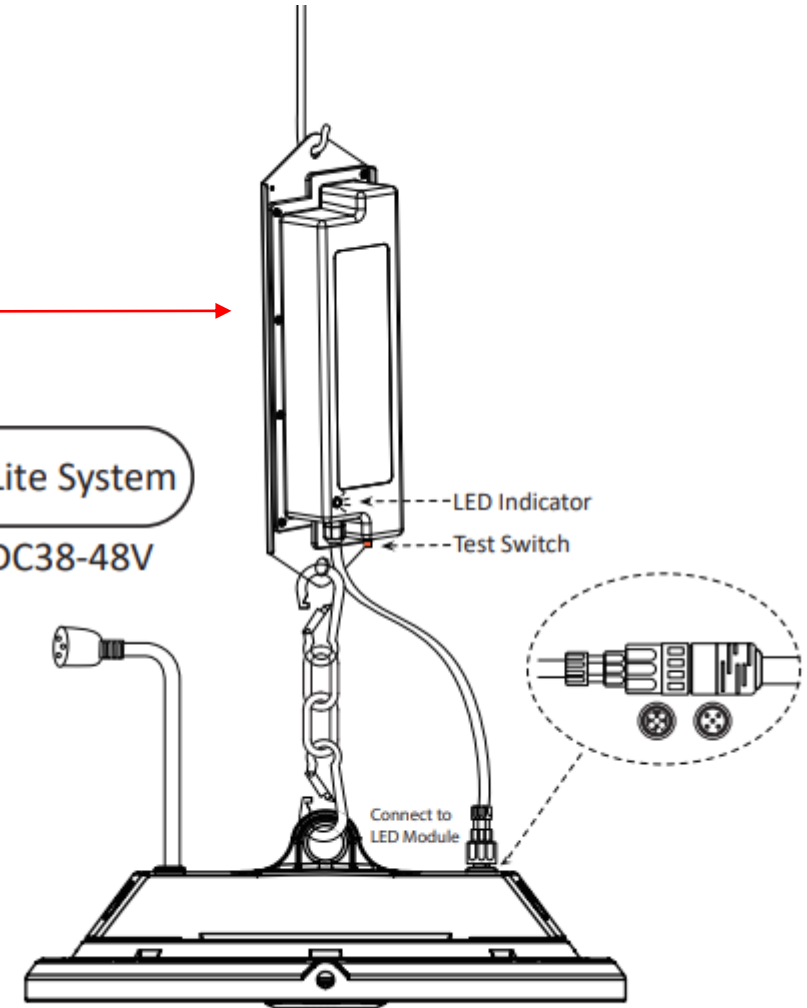
# EMERGENCY Low Voltage Highbay

Emergency pack

Size: (L\*W\*H)  
380\*123\*57mm



ELV Lite System  
AC/DC38-48V



# Accessories

The key advantages with our ELV solutions other than being safer is the **efficiency in which they can be installed, layouts modified** and be removed at the end of the project as well as the fact they can be **used again and again on future projects.**

This being the case we are always looking at ways to add to this including the adjacent product.

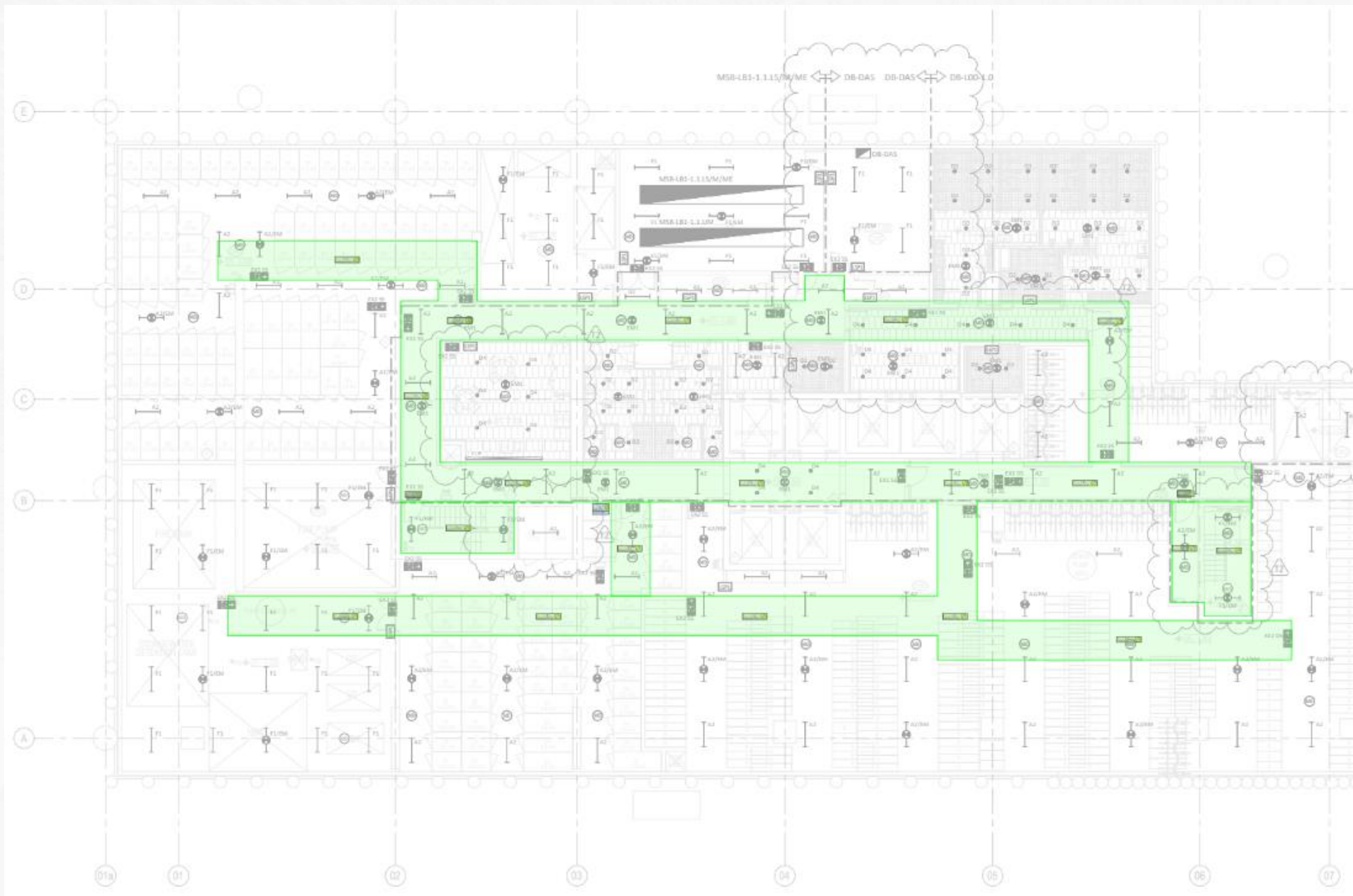


## ELV \_SKID Type A

1200mm x 1200mm skid with mounting position for control board + temp. power board and storage for 30 x fittings + leads + accessories.

# Drawing Mark Up Example

Spacings based on Table 5 in AS/NZS3012





# Our Results



Safe Wiring



Fast Installation



Time Saving



Re-use Products



Efficient LEDs



Time Saving

ELV|lite™

