

## □ LARGE COMMERCIAL PROJECTS □

# CSL HAWARA

### Situation

Faced with stringent timelines throughout the project duration, our team navigated the challenges with precision and strategic planning.

### Task

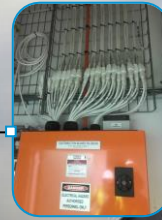
Supply a plug and play system to reduce installation time on-site and decrease the risk of commissioning faults to be able to meet tight timelines.

### Action

Provide a full set of shop drawings for DALI lighting using our WireByClick modular system, and a comprehensive schedule of feeds up to 115m+ using MLEX including board enablers.

### Result

Successfully delivered a soft-wired solution across 16 levels, establishing seamless connections from switchboards to light fittings and power sub-circuits. This not only met the demanding project deadlines but also underscored our commitment to delivering innovative and reliable electrical infrastructure solutions.



**Client**  
Prime Electrical & Data

**Project Scope**  
Soft-wired modular solution

**Location**  
Melbourne, VIC

**Products Used**  
MLEX, WireByClick (DALI)

**Tags**  
Commercial, WireByClick, MLEX